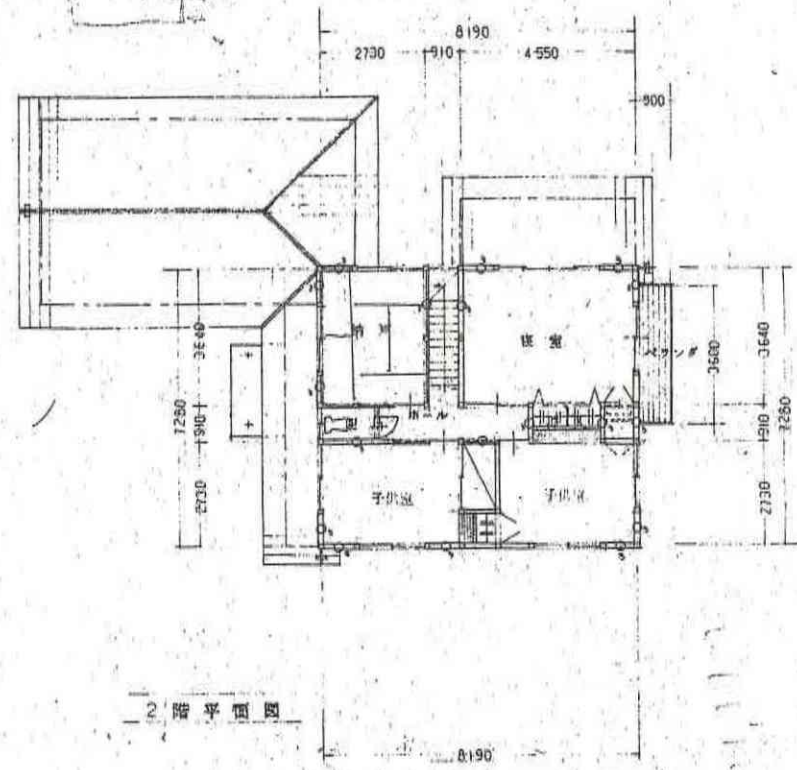


1階平面図 1/100

断面計算

床面積計	柱間面積計	筋コンクリート
床面積計 (4.5m x 10.0m)	4 x 3.0m	90 x 30
397.0 x 0.15 = 59.55	1035 x 0.5 = 517.5	0.71 x 6.715 = 4.767
2階建 x 2階建	4 x 2.7m	45
55.62 x 0.21 = 11.68	1815 x 0.5 = 907.5	0.91 x 3.2 x 1.2 = 3.46
2階建 x 1階建	4 x 2.7m	30
74.21 x 0.33 = 24.59	3015 x 0.5 = 1507.5	0.91 x 10.15 = 9.23
	4485 x 0.5 = 2242.5	30
	5715 x 0.5 = 2857.5	45
		0.71 x 2.2 x 0.91 = 1.41
		0.71 x 2.2 x 1.2 = 1.87
		0.71 x 2.2 x 1.5 = 2.34
		0.71 x 2.2 x 1.8 = 2.81
		0.71 x 2.2 x 2.1 = 3.28
		0.71 x 2.2 x 2.4 = 3.75
		0.71 x 2.2 x 2.7 = 4.22
		0.71 x 2.2 x 3.0 = 4.69
		0.71 x 2.2 x 3.3 = 5.16
		0.71 x 2.2 x 3.6 = 5.63
		0.71 x 2.2 x 3.9 = 6.10
		0.71 x 2.2 x 4.2 = 6.57
		0.71 x 2.2 x 4.5 = 7.04
		0.71 x 2.2 x 4.8 = 7.51
		0.71 x 2.2 x 5.1 = 7.98
		0.71 x 2.2 x 5.4 = 8.45
		0.71 x 2.2 x 5.7 = 8.92
		0.71 x 2.2 x 6.0 = 9.39
		0.71 x 2.2 x 6.3 = 9.86
		0.71 x 2.2 x 6.6 = 10.33
		0.71 x 2.2 x 6.9 = 10.80
		0.71 x 2.2 x 7.2 = 11.27
		0.71 x 2.2 x 7.5 = 11.74
		0.71 x 2.2 x 7.8 = 12.21
		0.71 x 2.2 x 8.1 = 12.68
		0.71 x 2.2 x 8.4 = 13.15
		0.71 x 2.2 x 8.7 = 13.62
		0.71 x 2.2 x 9.0 = 14.09
		0.71 x 2.2 x 9.3 = 14.56
		0.71 x 2.2 x 9.6 = 15.03
		0.71 x 2.2 x 9.9 = 15.50
		0.71 x 2.2 x 10.2 = 15.97
		0.71 x 2.2 x 10.5 = 16.44
		0.71 x 2.2 x 10.8 = 16.91
		0.71 x 2.2 x 11.1 = 17.38
		0.71 x 2.2 x 11.4 = 17.85
		0.71 x 2.2 x 11.7 = 18.32
		0.71 x 2.2 x 12.0 = 18.79
		0.71 x 2.2 x 12.3 = 19.26
		0.71 x 2.2 x 12.6 = 19.73
		0.71 x 2.2 x 12.9 = 20.20
		0.71 x 2.2 x 13.2 = 20.67
		0.71 x 2.2 x 13.5 = 21.14
		0.71 x 2.2 x 13.8 = 21.61
		0.71 x 2.2 x 14.1 = 22.08
		0.71 x 2.2 x 14.4 = 22.55
		0.71 x 2.2 x 14.7 = 23.02
		0.71 x 2.2 x 15.0 = 23.49
		0.71 x 2.2 x 15.3 = 23.96
		0.71 x 2.2 x 15.6 = 24.43
		0.71 x 2.2 x 15.9 = 24.90
		0.71 x 2.2 x 16.2 = 25.37
		0.71 x 2.2 x 16.5 = 25.84
		0.71 x 2.2 x 16.8 = 26.31
		0.71 x 2.2 x 17.1 = 26.78
		0.71 x 2.2 x 17.4 = 27.25
		0.71 x 2.2 x 17.7 = 27.72
		0.71 x 2.2 x 18.0 = 28.19
		0.71 x 2.2 x 18.3 = 28.66
		0.71 x 2.2 x 18.6 = 29.13
		0.71 x 2.2 x 18.9 = 29.60
		0.71 x 2.2 x 19.2 = 30.07
		0.71 x 2.2 x 19.5 = 30.54
		0.71 x 2.2 x 19.8 = 31.01
		0.71 x 2.2 x 20.1 = 31.48
		0.71 x 2.2 x 20.4 = 31.95
		0.71 x 2.2 x 20.7 = 32.42
		0.71 x 2.2 x 21.0 = 32.89
		0.71 x 2.2 x 21.3 = 33.36
		0.71 x 2.2 x 21.6 = 33.83
		0.71 x 2.2 x 21.9 = 34.30
		0.71 x 2.2 x 22.2 = 34.77
		0.71 x 2.2 x 22.5 = 35.24
		0.71 x 2.2 x 22.8 = 35.71
		0.71 x 2.2 x 23.1 = 36.18
		0.71 x 2.2 x 23.4 = 36.65
		0.71 x 2.2 x 23.7 = 37.12
		0.71 x 2.2 x 24.0 = 37.59
		0.71 x 2.2 x 24.3 = 38.06
		0.71 x 2.2 x 24.6 = 38.53
		0.71 x 2.2 x 24.9 = 39.00
		0.71 x 2.2 x 25.2 = 39.47
		0.71 x 2.2 x 25.5 = 39.94
		0.71 x 2.2 x 25.8 = 40.41
		0.71 x 2.2 x 26.1 = 40.88
		0.71 x 2.2 x 26.4 = 41.35
		0.71 x 2.2 x 26.7 = 41.82
		0.71 x 2.2 x 27.0 = 42.29
		0.71 x 2.2 x 27.3 = 42.76
		0.71 x 2.2 x 27.6 = 43.23
		0.71 x 2.2 x 27.9 = 43.70
		0.71 x 2.2 x 28.2 = 44.17
		0.71 x 2.2 x 28.5 = 44.64
		0.71 x 2.2 x 28.8 = 45.11
		0.71 x 2.2 x 29.1 = 45.58
		0.71 x 2.2 x 29.4 = 46.05
		0.71 x 2.2 x 29.7 = 46.52
		0.71 x 2.2 x 30.0 = 46.99



2階平面図

面積表

敷地面積	469.56 (142.2)
建築面積	119.13 (36.0)
1階床面積	114.232 (34.5)
2階床面積	55.62 (18.0)
延べ床面積	173.852 (52.5)

北
 1/100
 建築士事務所
 登録() 監理建築士